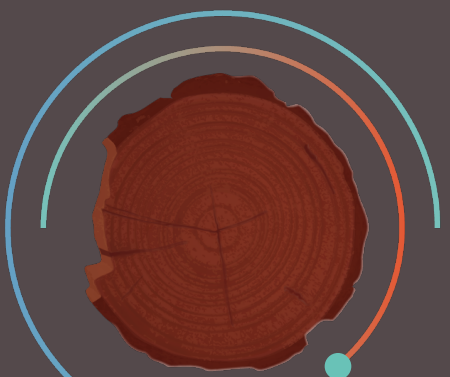


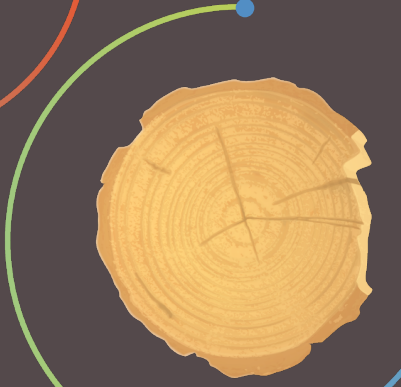
KNOW YOUR WOOD



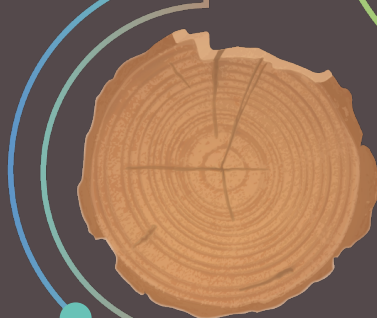
RED & WHITE OAK



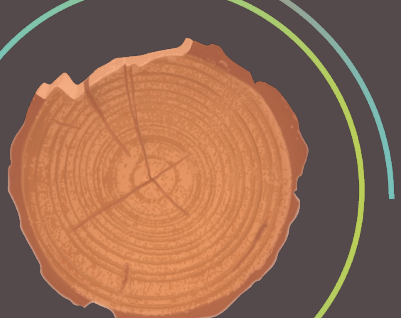
MAHOGANY



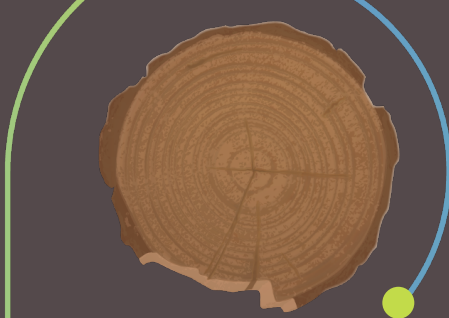
MAPLE



CHERRY



TEAK



WALNUT

HARDWOODS

higher density, prone to splitting, harder to drill without pilot hole, usually more expensive

CHOOSING THE RIGHT SCREW



HI LO POCKET HOLE SCREWS

Great threading for making face frames out of Red Oak and other hardwoods



QUICKCUTTERS

Extra cut on the threads relieves stress while driving into woods, enabling the screw to be driven into the hardest woods without splitting

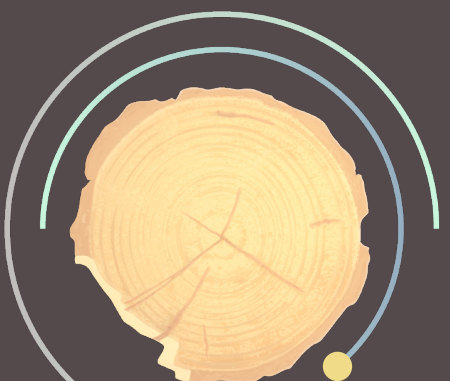


TYPE 17 HINGE & HARDWARE SCREWS

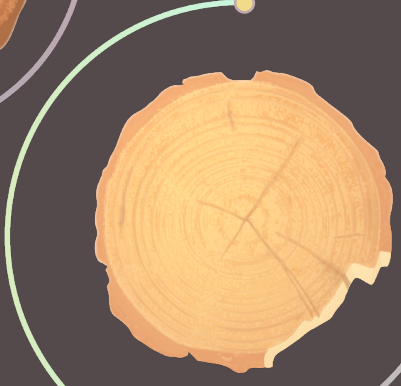
Can be driven without a Pilot Hole and reduces splitting



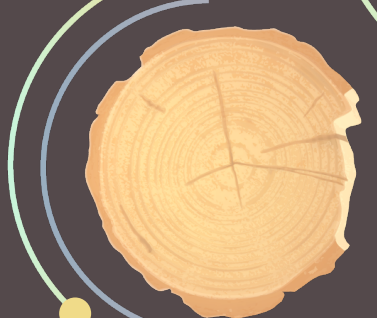
CEDAR



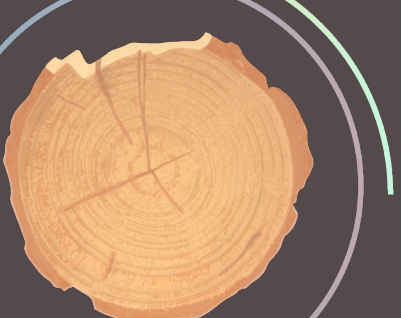
PINE



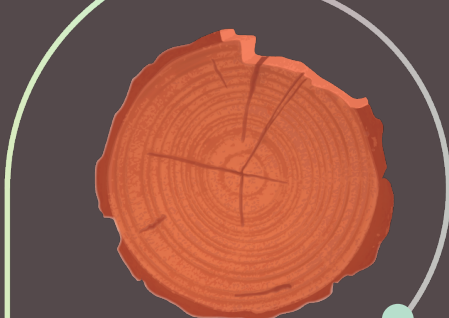
FIR



SPRUCE



HEMLOCK



REDWOOD

SOFTWOODS

lower density, prone to chipping, usually less expensive

CHOOSING THE RIGHT SCREW



COARSE THREAD ASSEMBLY SCREW

Deep Coarse Thread can be driven very fast and creates the best holding power in the industry



COARSE THREAD POCKET HOLE SCREW

Deep Coarse Thread can be driven fast with excellent holding power in softer woods



ULTRA GUARD DECKING SCREWS

Easy to drive and will withstand the elements better than steel exterior screws



FIND THESE SCREWS & MORE ONLINE
WWW.QUICKSCREWS.COM/KNOW-YOUR-WOOD

Questions? Call (800) 743-6916